

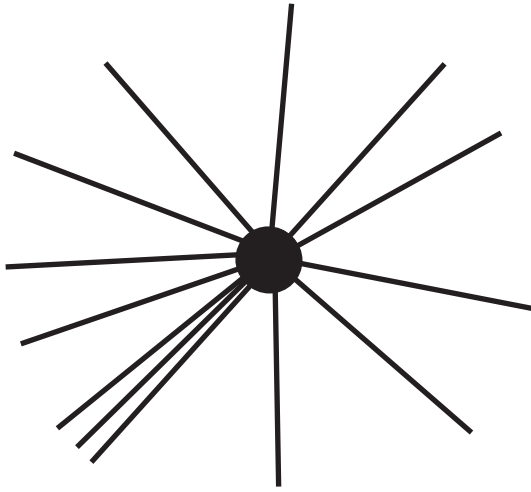
Circulation Realm

Marte Eknæs with Nicolau Vergueiro and Michael Amstad

ROM team

Temperature 2
Thermal footage shows energy. The landscape is organized through the measure of temperature. Humans and inanimate objects take on the same form as bodies of heat moving through space. The thermographic camera makes visible what we otherwise don't see.

The video was meant to be a live feedback of the street life in front of ROM, but due to rejection of funding applications, budget only allowed for a pre-recorded video to be shown. As a result, this has become a different piece. The thermographic camera then records the maintenance and preparation of the exhibition, displayed as a window projection, most visible from dusk to dawn through the spectrum of temperature.



Public Hygiene (used, Oslo)
Brushes have long been a material of interest in my practice. The first *Public Hygiene* piece was made in 2018 and consisted of a factory bought and unused street cleaning brush. The brush could be seen as an icon, standing in for all brushes. It was bright yellow, perfectly cylindrical and suspended vertically like a chandelier.

It was important for me to include this piece in the shared urban landscape into the gallery space. The economic framework of the exhibition didn't allow for shipment of a large scale sculpture, and thereby directed me to rethink the piece. *Public Hygiene (used, Oslo)* is a brush donated by Malleus in Lier. It has been used locally and comes with a rich register of information through dirt, frizzled and expressive bristles bent out of shape. From the handlers of the brush, we learnt that the small plastic "tooth" on each brush ring is their most important part. This contributed to the work being installed as it is: horizontal and spread out to show the rings' core.

Trash Can (restavfall)
The trash cans remain functional. The intention behind putting these receptacles on display is to give a view into the installation process and through the waste we produce in this way they are unreliable narrators, as they are unreliable perceptions of how to sort what we throw away. No rigid system has been imposed, but a lot of conversations have been had to keep these metal stands on a hand and slippery in the morning and The green metal stands were to be returned in the same way at the end of the exhibition period.

AISSat-1
A sun-synchronous low Earth orbit satellite launched in 2010 developed between the Norwegian Defense Research Establishment (NDRE), the Norwegian Space Centre and the Coastal Administration, used to receive Automatic Identification System signals - a collision avoidance navigational aid system for maritime traffic. The system became mandatory in most commercial ships from 2008 on. With the increased focus on maritime surveillance and control of the High North (arising following the appointment of Stoltenberg's Second Cabinet in 2005), the AISsats became part of a larger policy to strengthen Norway's grip on the Arctic areas. Norway's exclusive economic zone (EEZ) covers sea areas around Svalbard and Jan Mayen which in addition to the continental EEZ gives it an area of 1,878,953 square kilometers. Eighty percent of all Arctic shipping traffic passes through Norway's EEZ.

Concierge
Concierge is material registry leftover from a set styling job, where one of the many procured items was a concierge desktop plaque for a staged clubhouse lobby. In 2022 60% of Vergueiro's income came from set styling jobs for the advertising industry in Los Angeles. 70% of these jobs' end client was Amazon. The remainder of his income was from art sales and special commissions.

Thor 2
Launched in 1997, operated until 2008, the satellite remained in an inclined geostationary orbit until 2013, when it was retired to a graveyard orbit. Thor 2 delivered direct-to-home television programming and telephony services to Scandinavia and northern Europe, with western offshore beams to the Faroes, Iceland, and Greenland.

Inflatable
This flexible body was produced in 2017. In 2021 it was taken out of circulation and given the role of tool for exploring the city. It gets pulled, pushed, bounced around and left to float in urban landscapes causing scratches, dirt and other traces, gradually altering its surface. Like an explorer returning home, with new life experience, *Inflatable* is tended to by the ROM team. Tattered to a leath, it is walked in place outside during the opening hours and brought back in for the night. As its form contains air, it will inflate or deflate as it is exposed to temperature changes.

Coil
The main materials for Coil are packaging from cannabis products, legalized for sale in the state of California for recreational use in 2018. Cannabis tax revenue for the state of California to date is \$4.4 billion. For every gram of cannabis sold legally 70 grams of plastic waste is generated.

White Board
Purchased as requested by Eknæs, to use during her ROM studio residency in 2021 to lay out the initial ideas of this project. It has later been integrated into the ROM office operations.

Climate Impact
A report of the carbon emission produced by the exhibition, created with Green Producers Tool by Green Producers Club. This tool was developed for the culture sector initially for TV, film, stage and concert events. Green Producers Tool is now being broadened to suit art production. The climate impact report from Circulation Realm will contribute to this update to the tool.

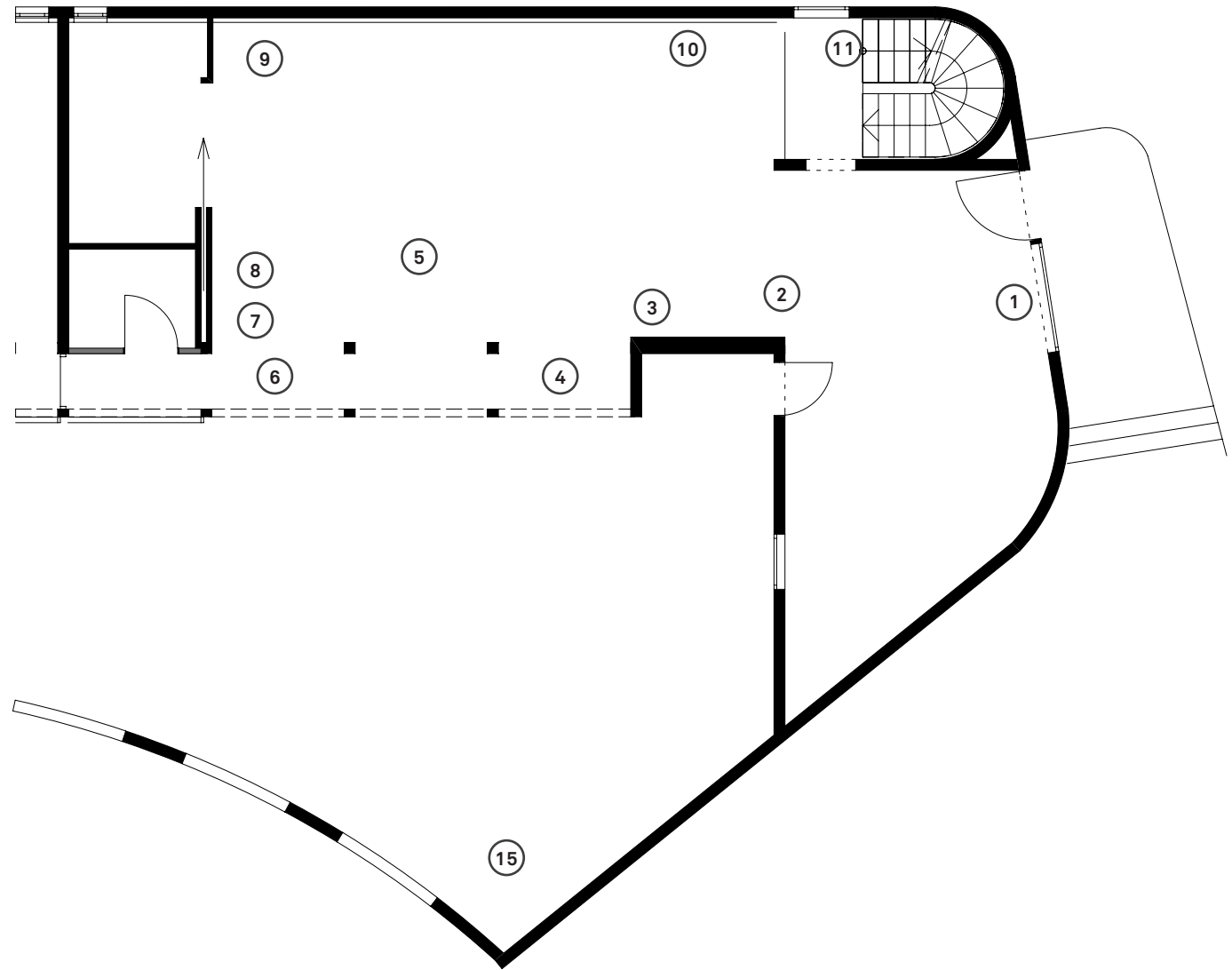
Safety Guard
Installed to create a safe environment for the artists' child.

Contract
As a formal document a contract is binding mutual agreements. It normally lays out a rigid framework. In *Circulation Realm* the contract is used as a flexible and dynamic document, receptive to changes throughout the exhibition. The contract is a handout in the exhibition and a public reading and discussion of it will take place at the opening.

Ghost/Space
The process of making this exhibition is documented with digital and thermographic cameras. This will be combined with animation. This short film after it is closed.

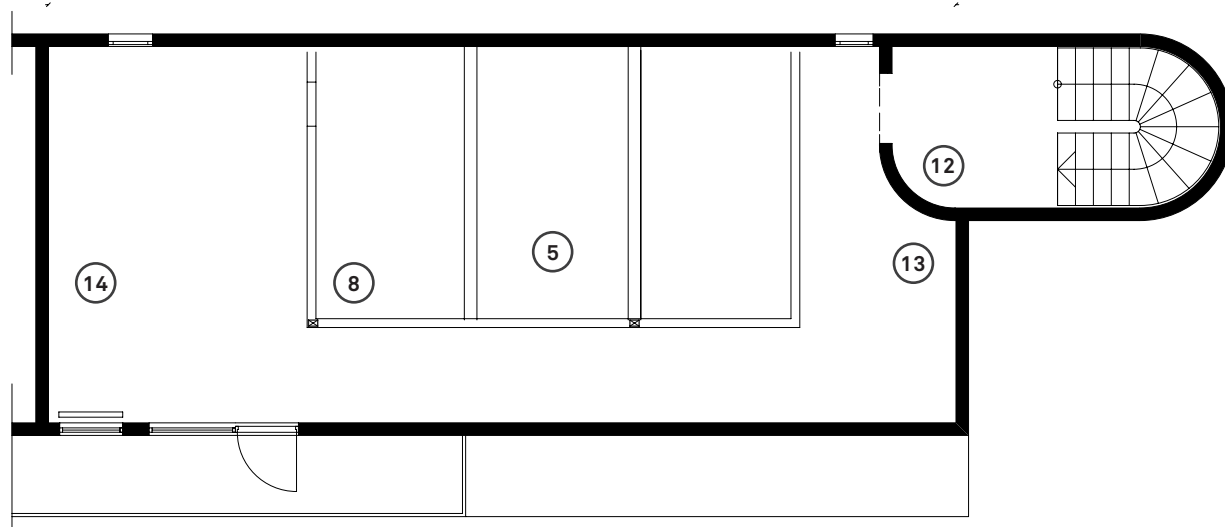
Exhibition overview

- 1) Temperature 2 - ME / MA
- 2) Thor 2 - NV
- 3) Concierge - NV
- 4) AISSat-1 - NV
- 5) Sign Post - ME / NV
- 6) Temperature 113° - ME / MA
- 7) Trash Can (restavfall) - ME / ROM
- 8) Coil - NV
- 9) Public Hygiene - ME / ROM
- 10) Contract - ME / ROM
- 11) Safety Guard - ME / UAE
- 12) Climate Impact - ME
- 13) Trash Can (plast) - ME / ROM
- 14) White Board - ME
- 15) Inflatable - ME



Circulation Realm

The exhibition's budget, use of resources, social conditions, politics and the climate crisis are directly affected by the same mechanisms that govern the rest of society. The works reveal how technical, material and social conditions have created each of their own form.



Library QR code

